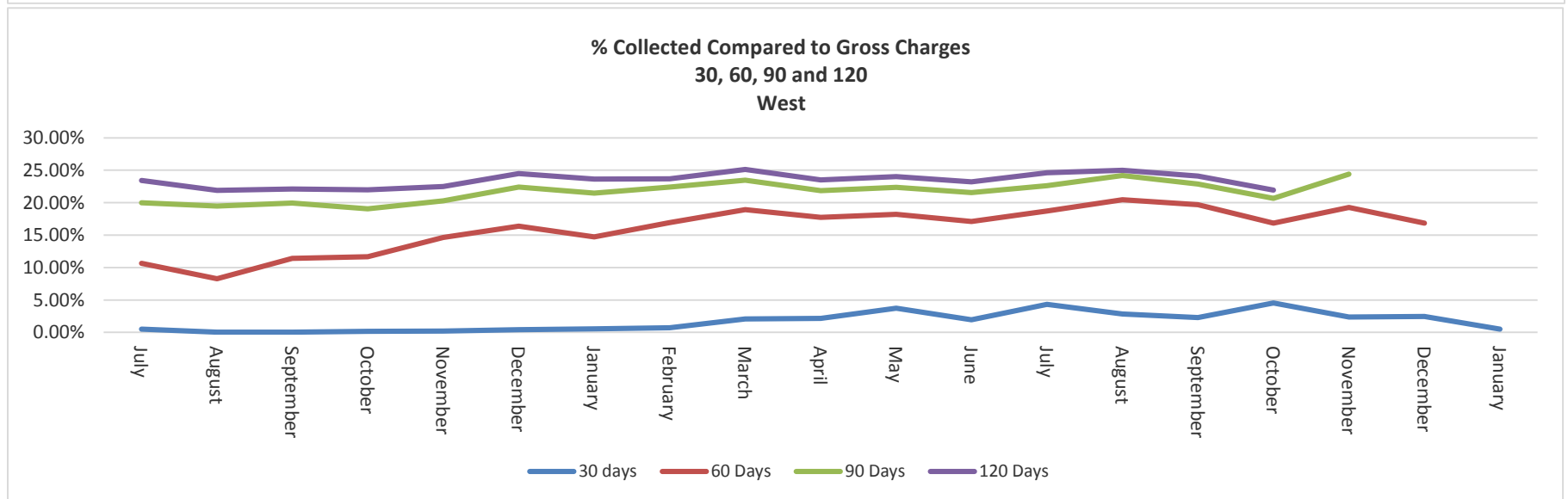
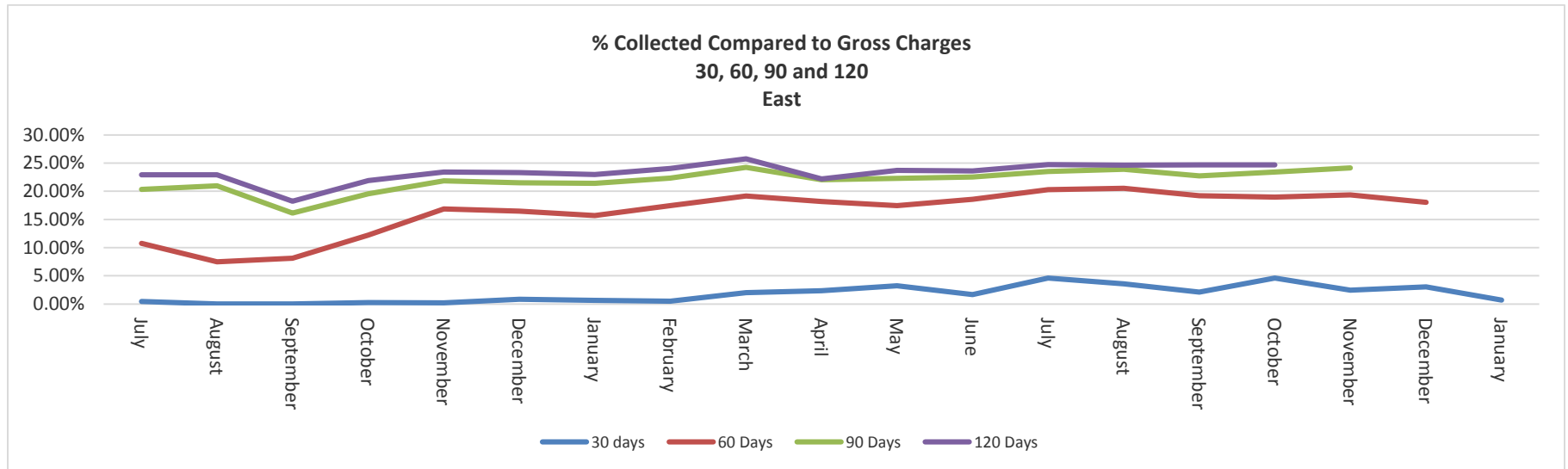


Patient Financial Services
Key Performance Indicators
February 2015

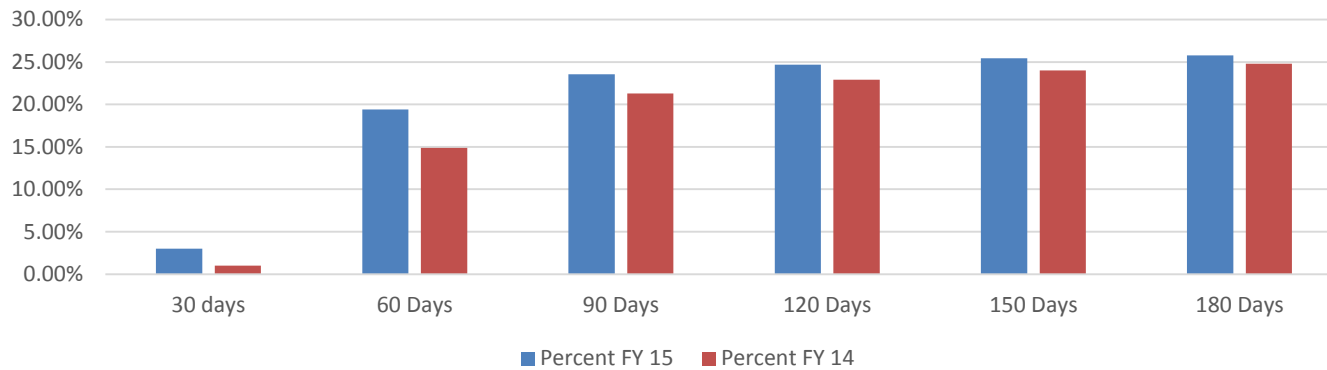
% Collected Compared to Gross Charges

30, 60, 90 and 120 Days

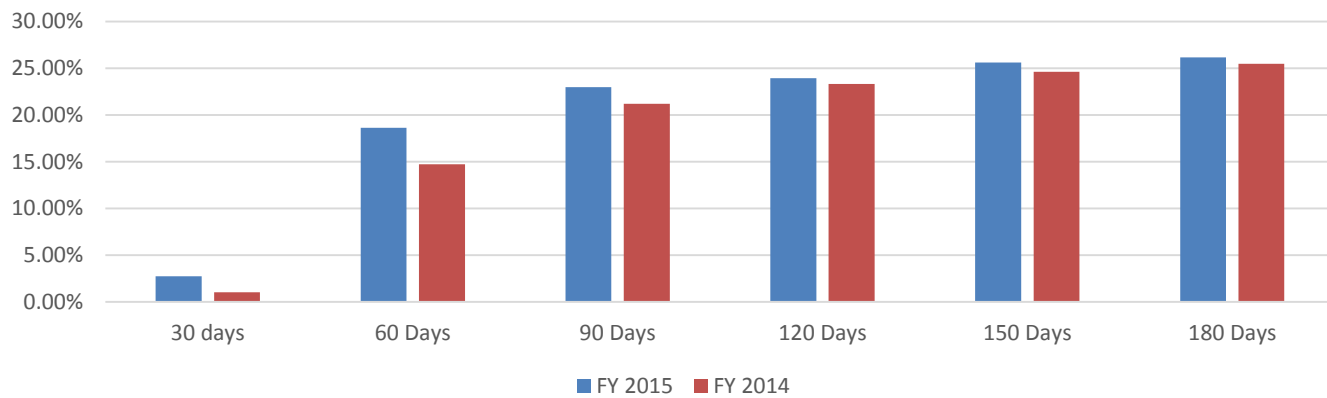


This shows more cash is coming in quicker than previous years. We have went from collecting 11% of gross charges within 90 days to collecting on average 20% of gross charges within 90 days. This is compared to gross charges not net charge.

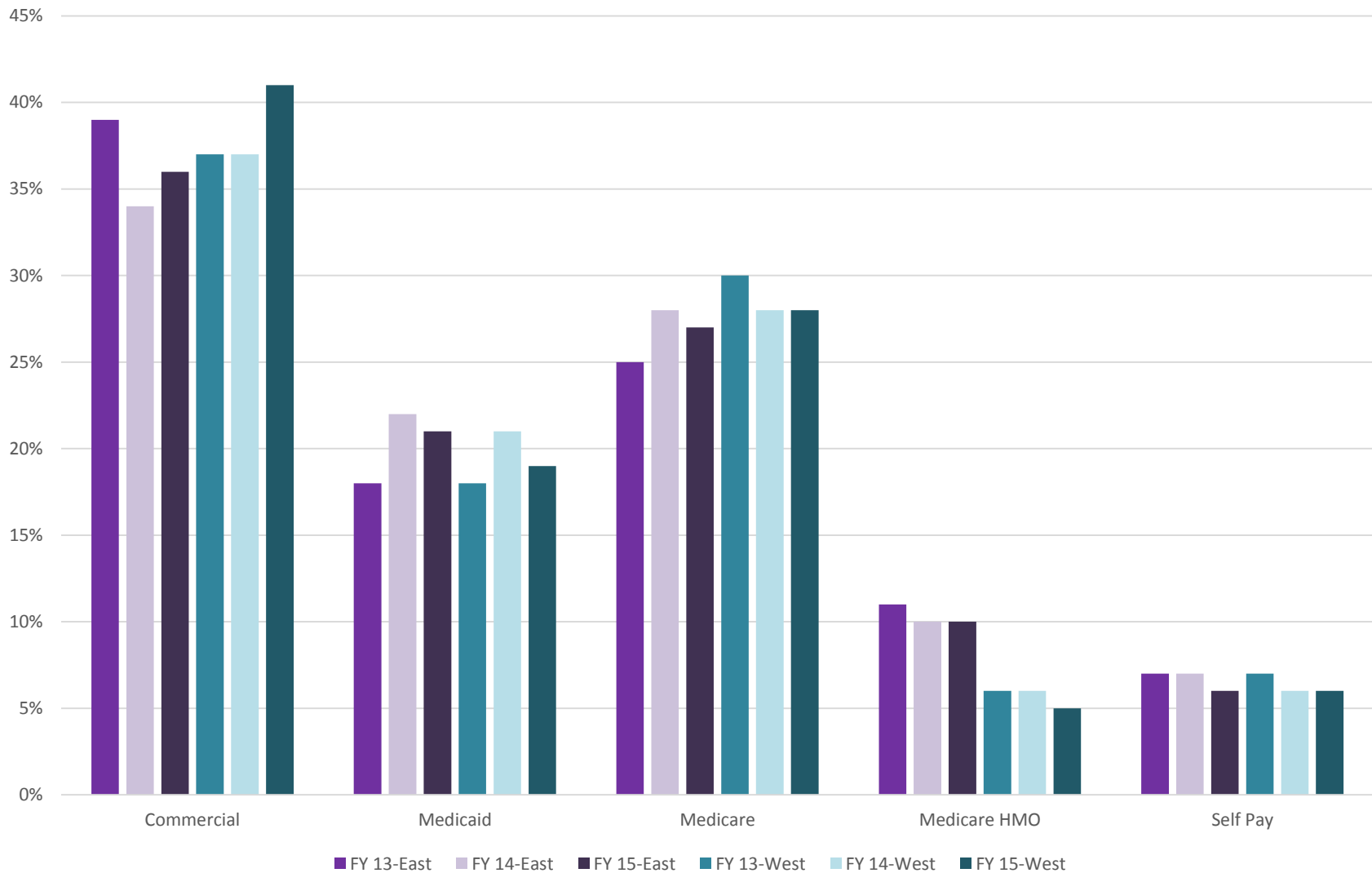
Average % of Collections to Gross Charges
Different Date Intervals
East



Average % of Collections to Gross Charges
Different Date Intervals
West



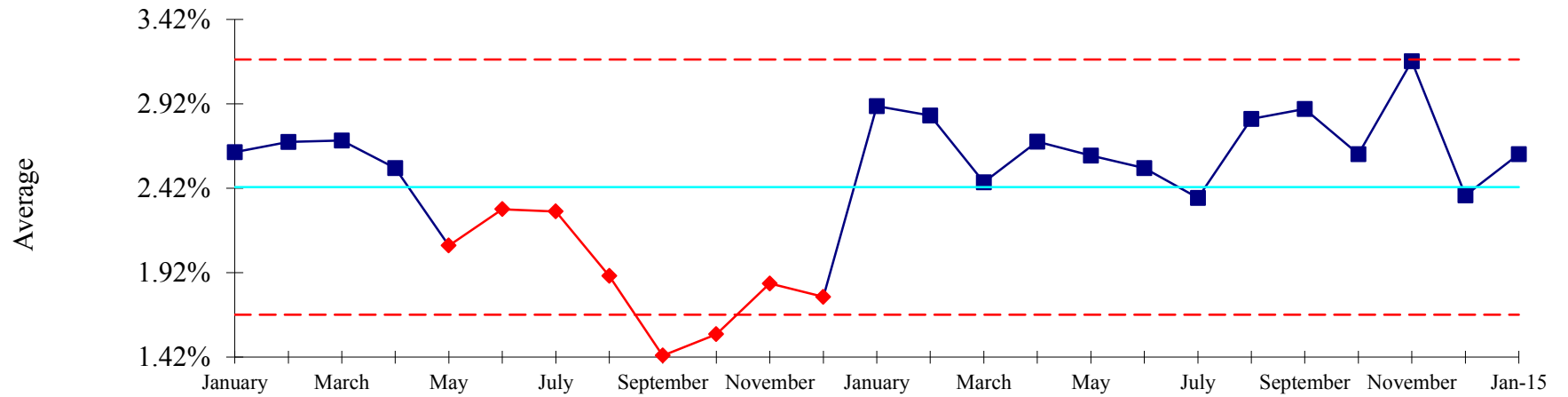
% of Average Weekly Payor Mix Through 01/31/2015



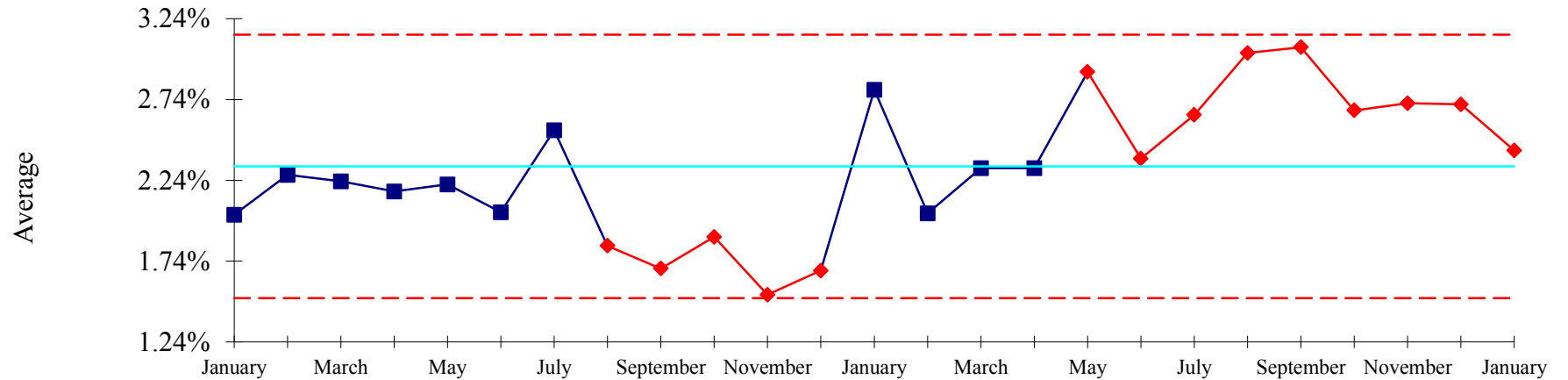
Higher Percent of Medicaid and Medicare HMO will result in lower cash due to lower payments and higher patient co-pays. Higher commercials could be less cash due higher deductibles.

Levels of Service

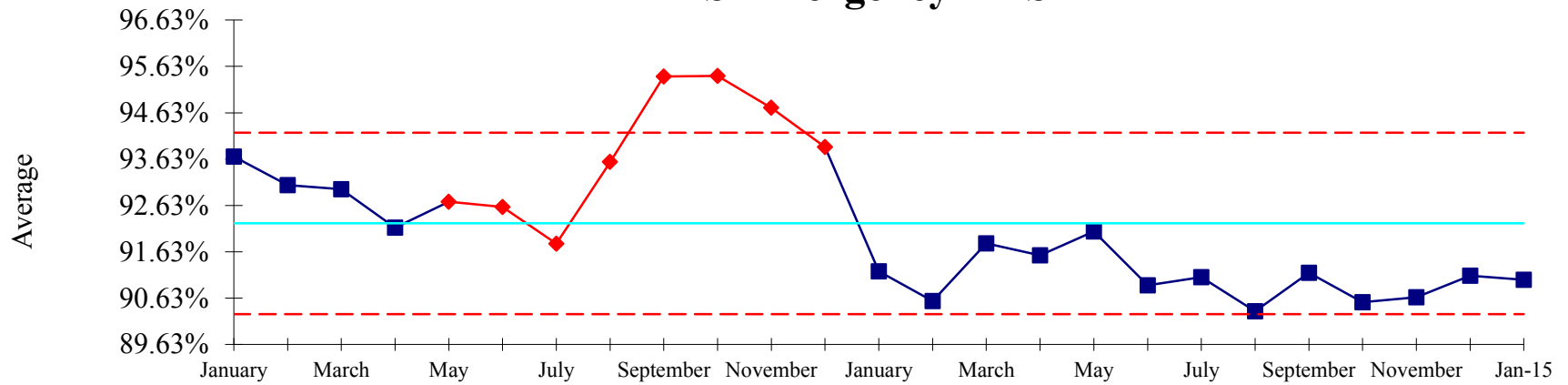
SCT/ALS2-EAST



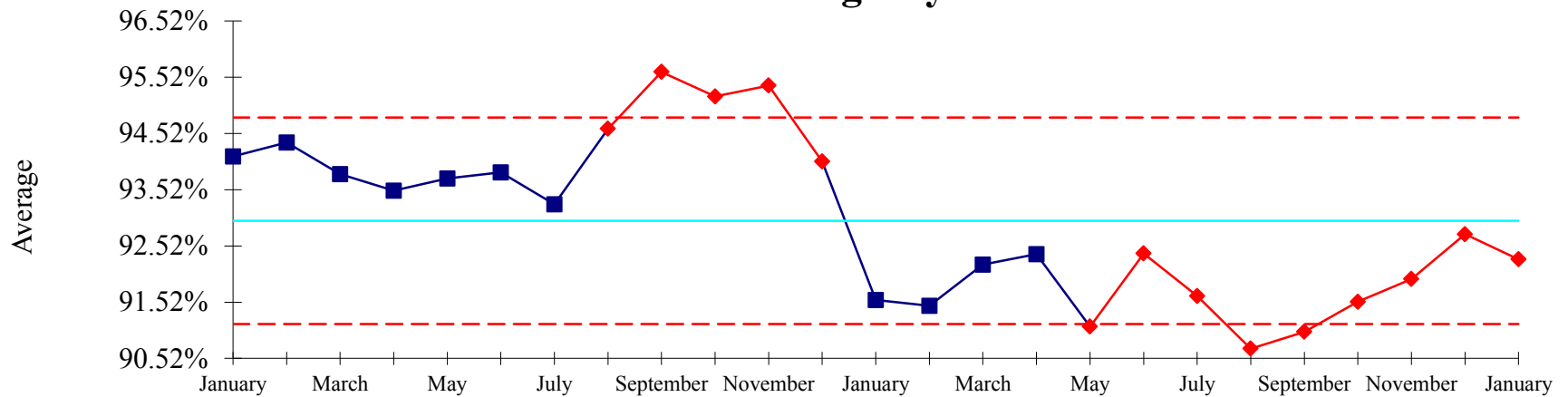
SCT/ALS2-WEST



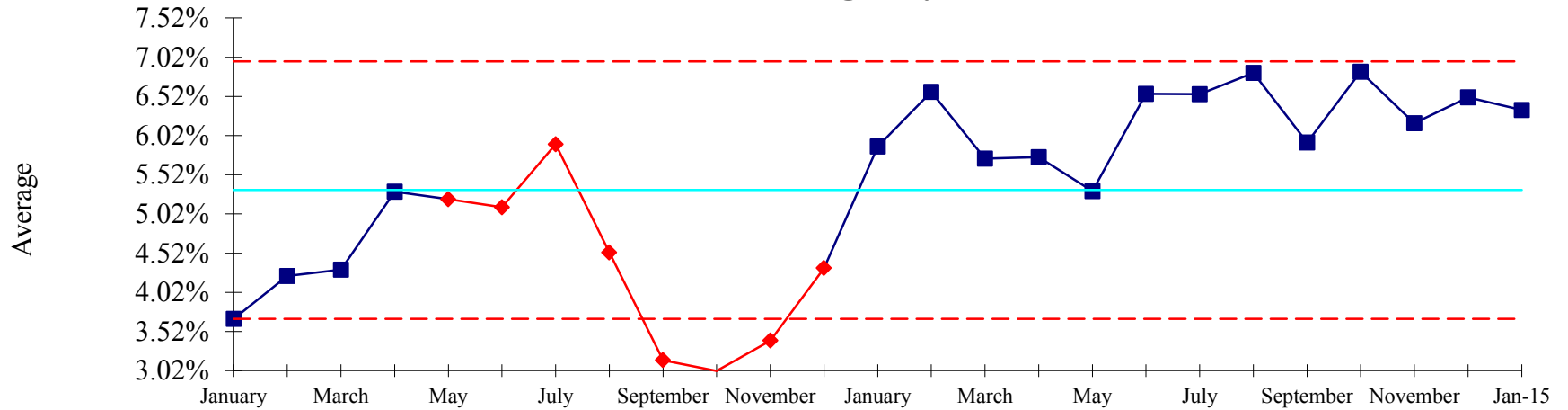
ALS Emergency-EAST



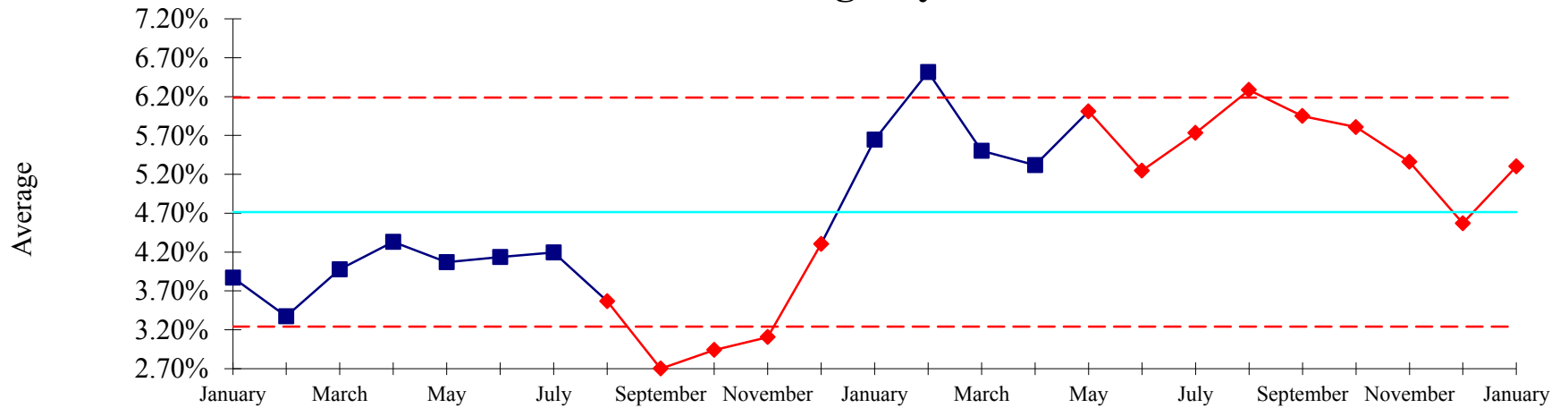
ALS Emergency-WEST



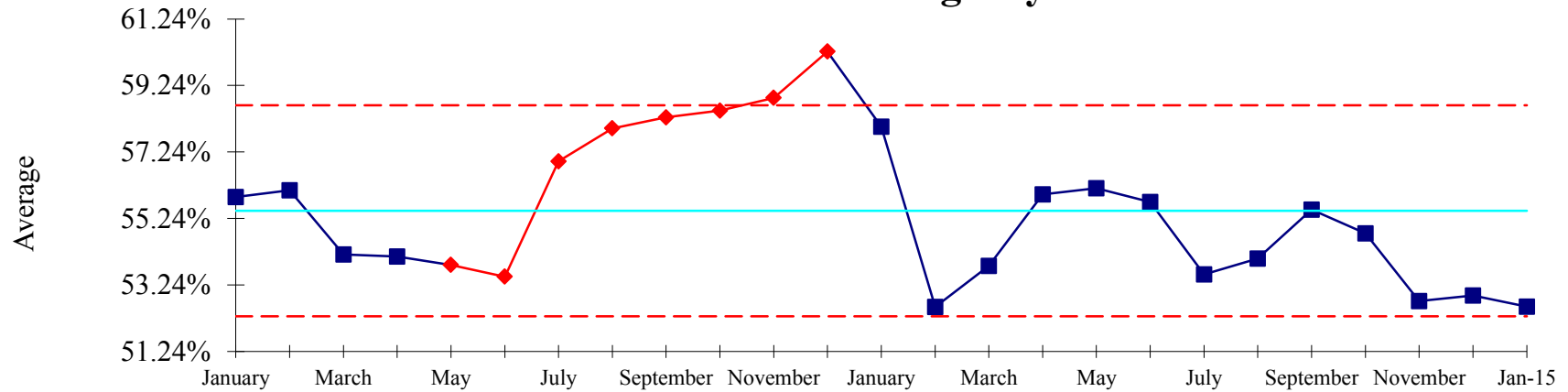
BLS Emergency-EAST



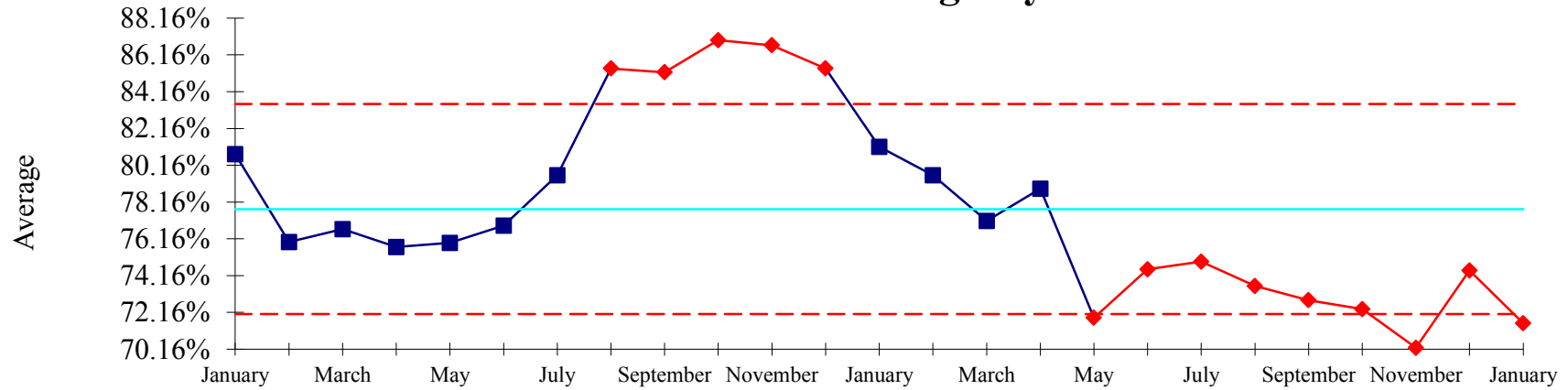
BLS Emergency-WEST



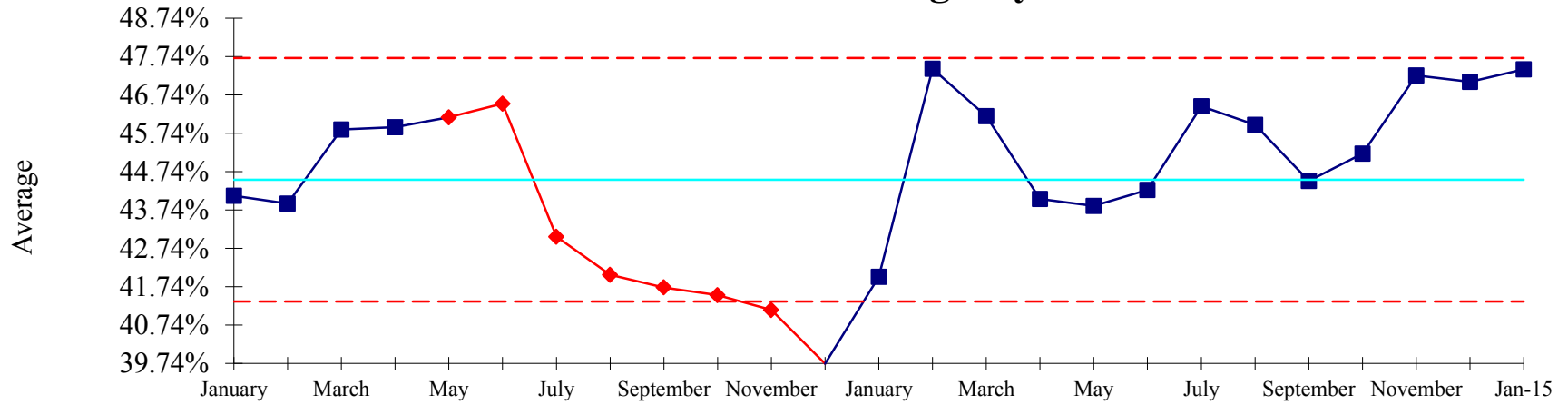
ALS Non-Emergency-EAST



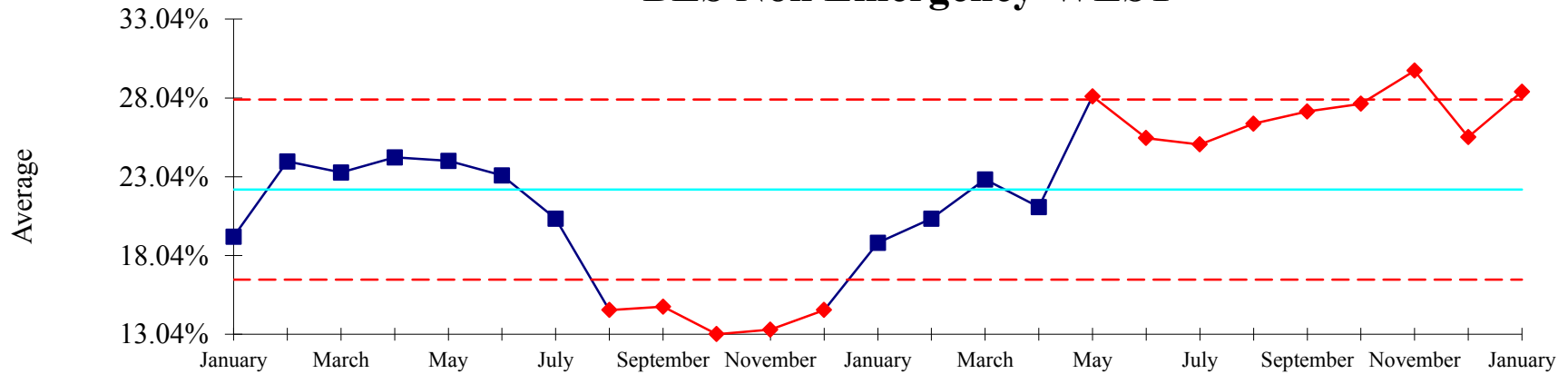
ALS Non-Emergency-WEST



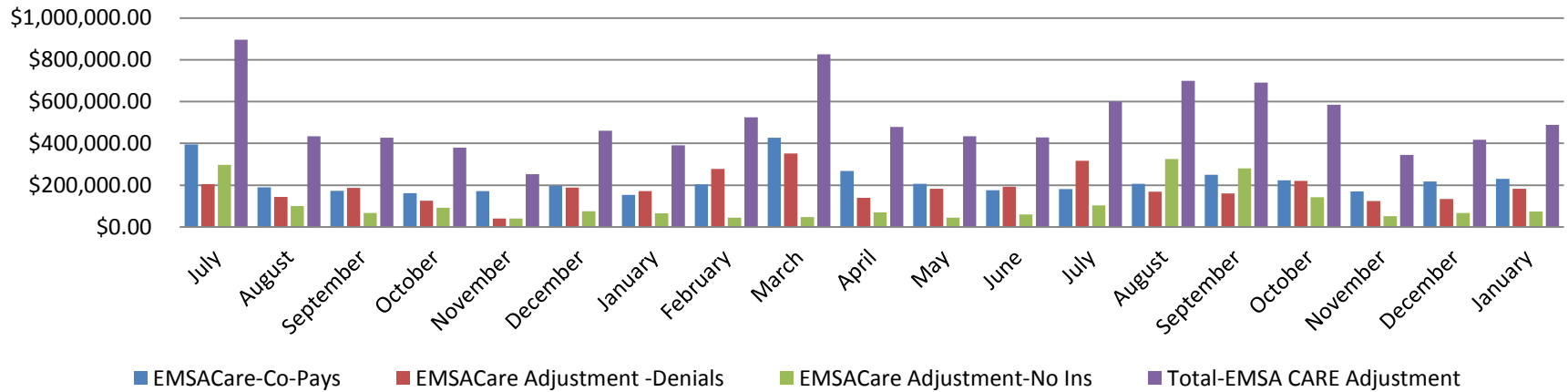
BLS Non Emergency-EAST



BLS Non Emergency-WEST



EMSACare Adjustments West



EMSACare Adjustments East

